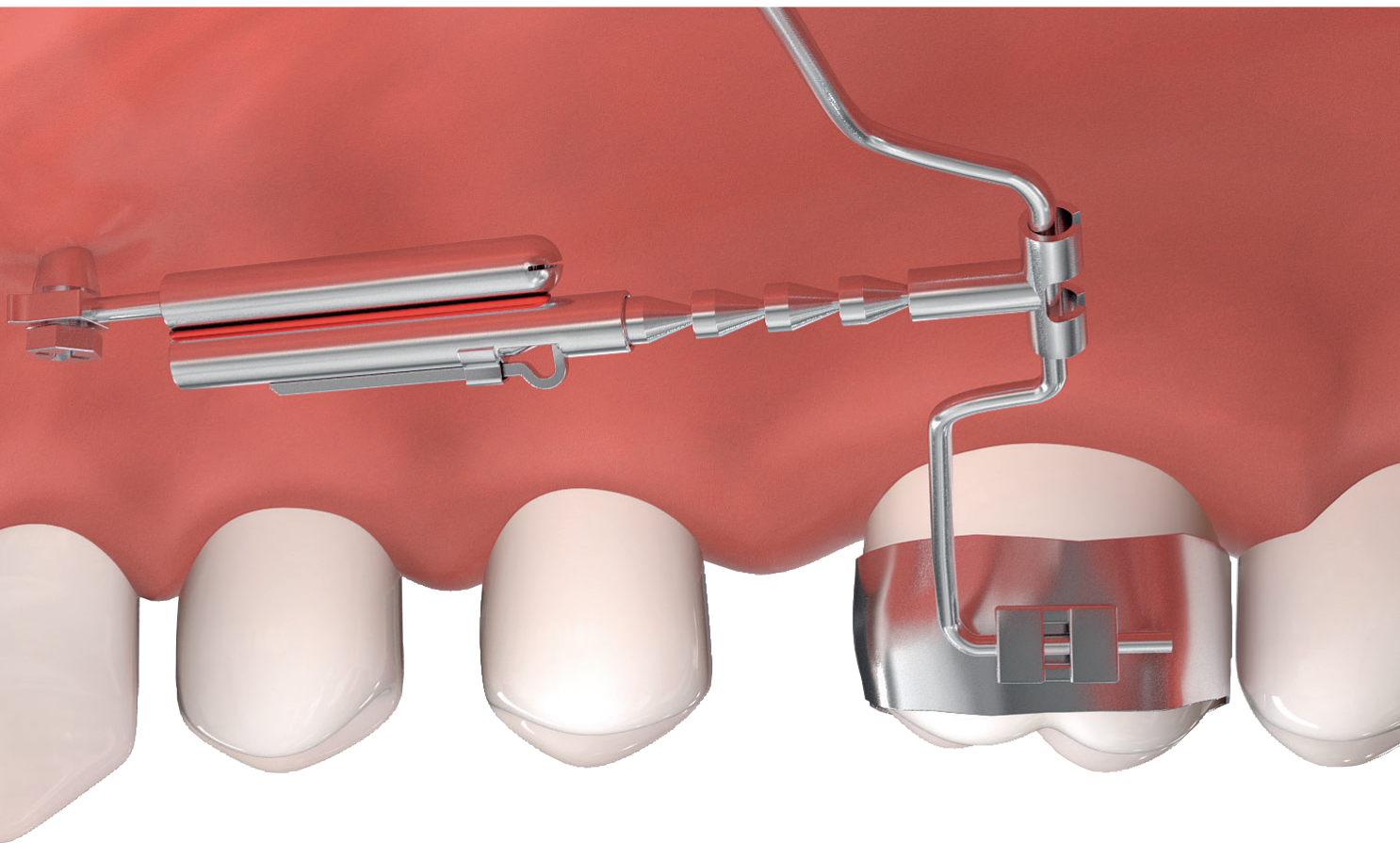


The reliable & easy system for chairside distalization!

TopJet **Distalizer**

The invisible power pack
for your distalization work

- Purely chairside
- Fast insertion in minutes
- Easy dosing and activation

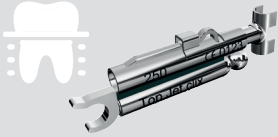


Product information

The TopJet Distalizer is a molar distalisation device with which the posterior maxillary teeth on one or both sides can be distalised approx. 0.8 mm per month, without further manual assistance. It is clipped onto one of the mini anchor screws inserted in the anterior palate and its length can be individually adjusted. In no other device is the insertion so easy and with such a homogeneous effect at the same time.

Versions

REGULAR FORCE 1 Molar (250)



Recommended for children up to 13 years.

* Additionally we offer for:
Children extra length (250+8)

STRONG FORCE 2 Molars (360)



Recommended for adults and when 1st and 2nd molar needs to be moved.

Adults extra length (360+8)

Indications

1. Crowding in the front maxilla with sufficiently long jaws
2. Protruding front maxillary teeth
3. Lack of space in the maxillary posterior tooth region.
4. Molar class II occlusion in the setting of migrated maxillary molars

Case study

Linda had a significant lack of space. The TopJet Distalizer opened the space without further assistance and without any extraction.



Hands-on course

Visite us in Bregenz for our in-office hands-on courses with live patients:

1. Conveys in-depth theoretical knowledge of secure insertion and application of palatal mini screws for orthodontic anchoring.
2. Active observation of the insertion of mini-screws as well as the installation in/removal of devices from the patient.
3. Detailed exercises on a typodont.

TopJet Distalizer courses: **PowerScrew courses:**

- 15 May 2020

- 28 February 2020

- 25 September 2020

Register here!

Eva Diem, Organization courses & lectures

Phone +43 5574 4350 431

eva.diem@tigerdental.com

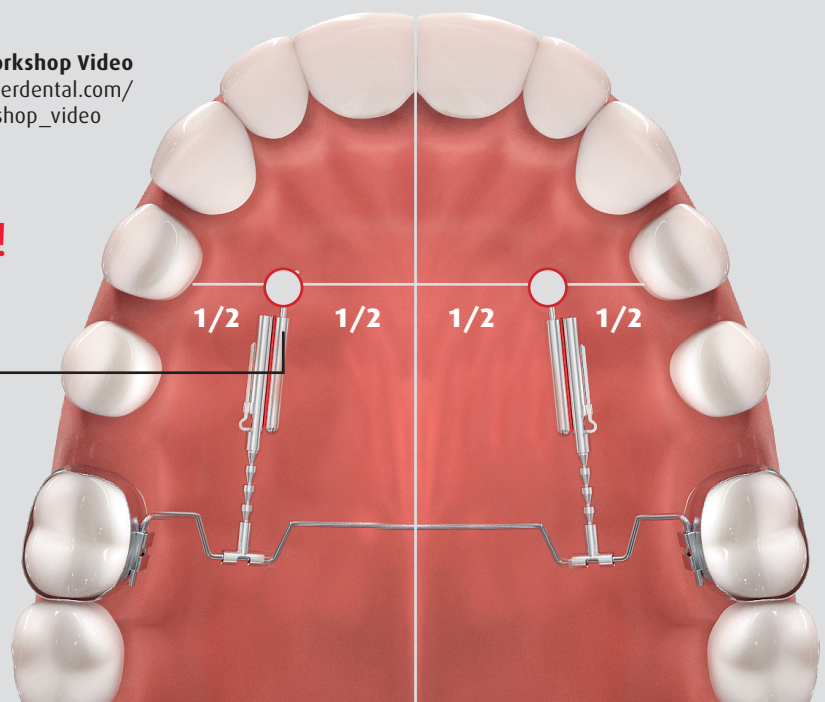


Tiger Dental Workshop Video
https://www.tigerdental.com/tiger/link/workshop_video

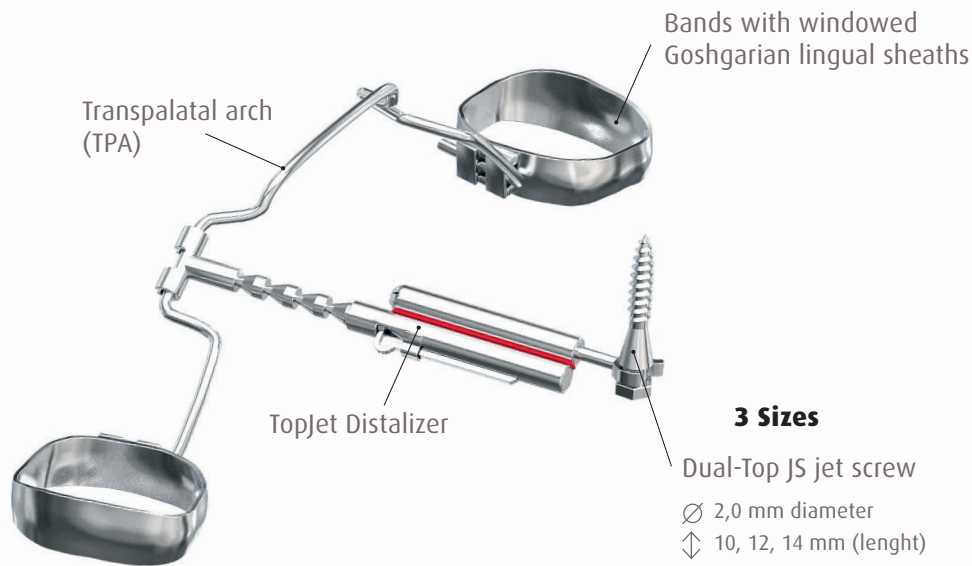
Usable on one or both sides!

M4 positions= middle line 4th teeth.

"The area between the premolar and the midline is proofed to be a safe position with enough bone to place the miniscrew"-
Dr. Heinz Winsauer.



The System



Tutorial video
https://www.tigerdental.com/tiger/link/tj_08_2017



Patient information
https://www.tigerdental.com/tiger/link/topjet_ifu

Equipment

Dual-Top JS jet screw

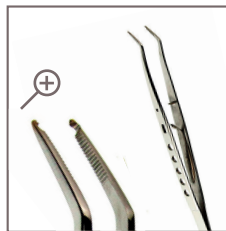


W&H Prosthodontic screwdriver IA-400

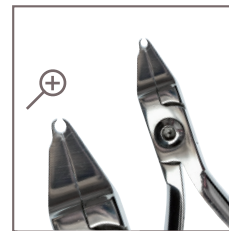


Hexagonal screwdriver shaft

TopJet Distalizer



Fixation forceps



T-connector pliers

Transpalatal arch



GC Ortho Connect Flow

Your Benefits



Fully chairside

The TopJet Distalizer is a unique molar distalizer as it can be inserted easily chairside with absolute no laboratory work.



Quick installation

Mini anchor screws are able to be placed in the anterior palate in a matter of seconds. There are no dental roots or vessels in this area. The entire insertion of the TopJet Distalizer takes less than 20 minutes.



Strong & Effective

The TopJet Distalizer 250 (250 cN) is preferably used in children cases. The 360 (360 cN) is used for molar and pre-molar distalisation in adult cases. The patented „clix“ system allows an individual adaption of force.

Tiger Dental

Tiger Dental GmbH.
Belruptstraße 59
6900 Bregenz
Austria

T +43 (0) 5574 435043
F +43 (0) 5574 43504350
E office@tigerdental.com
www.tigerdental.com

TopJet  ***Distalizer***

TopStop

◀ ***PowerScrew*** ▶

Flex Developer 

Herbst Developer 

Mini Mold 

TopClip

Piggy  ***back spring***

Reflex 
Communicator